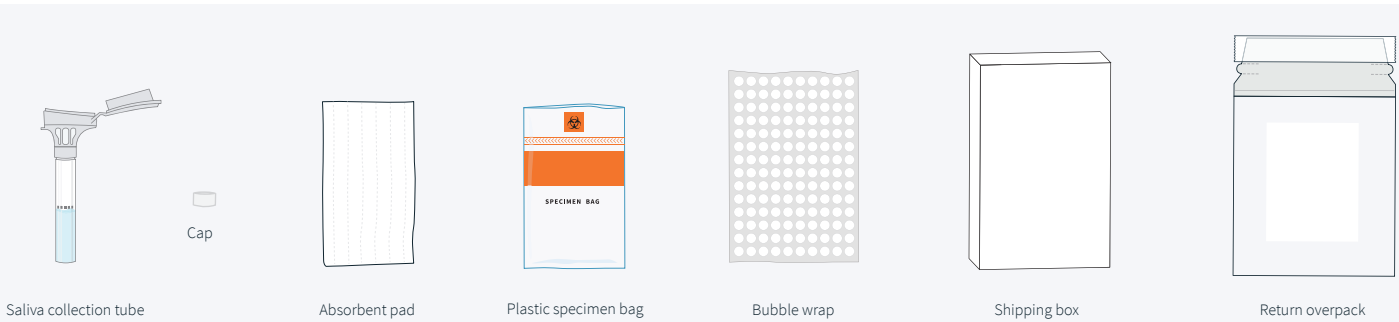


P23 AT-HOME COVID-19 TEST COLLECTION KIT

Saliva Sample Self-Collection Instructions

Patients are required to meet specific qualifications in order to receive a Coronavirus (COVID-19) test. The following criteria recommended by the Centers for Disease Control (CDC) help P23 Labs to conserve our limited tests. Self-isolation is the most effective method of preventing the spread of the virus; <https://www.cdc.gov/coronavirus/2019-ncov/prevent-getting-sick/prevention.html>



The P23 At-Home COVID-19 Test Collection Kit may be right for you, if you:

- Are currently experiencing COVID-19 symptoms.
- Live in or recently traveled to an area with an ongoing spread of COVID-19.
- Have been in close contact with a person known to have COVID-19.
- Think you have been exposed to COVID-19.

Note: This kit can be used for healthcare provider-collected saliva, self-collection in a healthcare setting, self-collected at-home via telemedicine and unsupervised self-collection at home.

The P23 At-Home COVID-19 Test Collection Kit may **NOT** be right for you if you:

- Currently have severe symptoms that limit your daily activities. Seek medical attention right away if this is the case.
- Do not have symptoms and have not been exposed to COVID-19.
- Have been in close contact with a person known to have COVID-19.
- Do not have symptoms and have not been to an area with an ongoing spread of COVID-19.

How does the P23 At-Home COVID-19 Test Collection Kit work?

The P23 At-Home COVID-19 Test Collection Kit provides you with a way to get tested for the virus from the comfort and security of your own home by providing a saliva specimen. No trip to the doctor's office or other healthcare provider is required to get COVID-19 testing.

1. Complete COVID-19 Medical Questionnaire:

Visit <https://p23labs.com/covid-19-kit> to complete a short health screening questionnaire to determine your risk of contracting the disease.

2. Order kit: Purchase the P23 At-Home COVID-19 Test Collection Kit on the website. Once your order has been placed, P23 Labs will send the COVID-19 test kit, registered with your unique barcode, to your home.

3. Collect specimen: The P23 At-Home COVID-19 Test Collection Kit includes everything you need to collect your saliva specimen. Watch the video (see link on the next page) to learn more about how to collect your specimen.

4. Send to the lab: After your specimen is collected, send it back in the pre-paid packaging for processing within 24 hours of collection. Drop off the sealed return overpack containing your specimen at the closest FedEx BEFORE the last pickup of the day.

5. Get your result: You will receive an email notification when your result is ready and you can access it online in your secure P23 account. After receiving your COVID-19 result, you have the opportunity to talk to a licensed physician who can answer any questions you may have about your result.



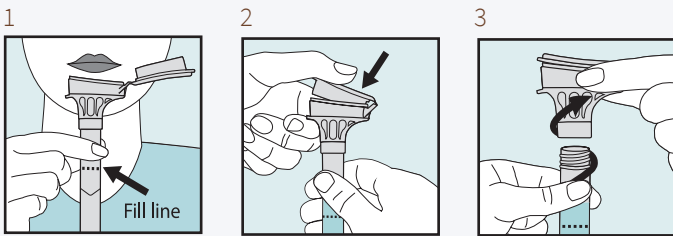
IMPORTANT

- Follow all directions carefully to ensure an adequate specimen is collected for testing.
- Do **NOT** eat, drink, smoke or chew gum for 30 minutes before giving your saliva specimen.
- Do not remove the plastic film on the tube's funnel.

For video instructions, see: <http://www.youtube.com/watch?v=IObkXhjPVIU>

01 Specimen collection

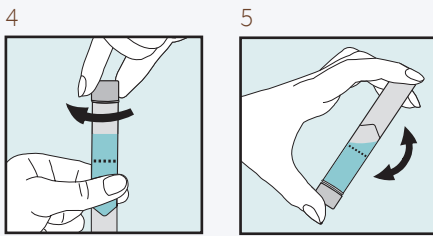
1. **IMPORTANT:** Wash your hands thoroughly for 20 seconds then dry your hands before starting the collection.
2. Open your P23 At-Home Covid-19 Test Collection Kit and place all of the contents on a clean, dry surface.
3. Remove the saliva collection device from its packaging, apply a sample label from the Test Request Form to the collection tube, and collect your specimen.
4. **IMPORTANT:** Wash your hands thoroughly for 20 seconds again, then dry your hands after completing the collection.



1 Spit into the funnel until your saliva reaches the fill line.

2 Close the funnel. You should hear a click!

3 Hold the tube upright and unscrew the funnel from the tube.



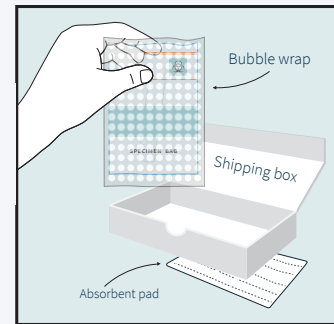
4 Screw on the small cap tightly.

5 Shake your tube for 5 seconds. Discard the funnel.

02 Specimen shipping preparation

1. Make sure the cap on your specimen tube is tightly closed.
2. Place specimen tube into the bio hazard bag containing the absorbent sheet, remove the strip at the top of the bag and press firmly across the closure to seal.
3. Place sealed bio hazard bag into the box and close it.
4. **IMPORTANT:** Wash your hands thoroughly for 20 seconds again, then dry your hands after completing the shipping preparation.
5. Place the box into the labeled return overpack shipping bag, remove the adhesive liner strip and seal the bag closed.
6. Drop off the sealed return overpack containing your specimen at the closest FedEx or UPS drop box.

IMPORTANT: Drop off the return overpack at the shipping depot within 24 hours of specimen collection.



03 Results are ready within 72 hours

Your results will be available in your secure patient portal and as part of your Electronic Medical Record (EMR), at your physician's request. For questions at any time, please call the laboratory help line at **901-341-6464**. Our professionals are available to guide you.

©2020 BioIQ. All rights reserved. BioIQ and BioIQ logo are trademarks or registered trademarks of BioIQ, Inc.

To learn more please visit www.bioiq.com/covid-19-solution/

- This test has not been FDA cleared or approved;
- This test has been authorized by FDA under an EUA for use by authorized laboratories;
- This test has been authorized only for the detection of nucleic acid from SARS-CoV-2, not for any other viruses or pathogens; and
- This test is only authorized for the duration of the declaration that circumstances exist justifying the authorization of emergency use of in vitro diagnostics for detection and/or diagnosis of COVID-19 under Section 564(b)(1) of the Act, 21 U.S.C. § 360bbb-3(b)(1), unless the authorization is terminated or revoked sooner.

©2020 BioIQ. All rights reserved. BioIQ and BioIQ logo are trademarks or registered trademarks of BioIQ, Inc.