

NASAL-BASED COVID-19 TEST KIT

Hello. Welcome to Your COVID-19 Test Kit.

What's in the kit?



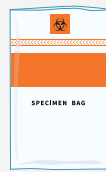
Test Request Form



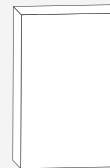
Collection Tube



Swab



Specimen Bag
& Absorbent Pad



Small Shipping Box



Return Overpack

Let's Get Started.

Here's a quick overview.



Get to Know Your Kit



Complete Paperwork and Take Your Test



Package and Mail

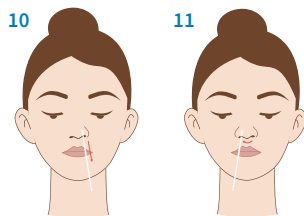
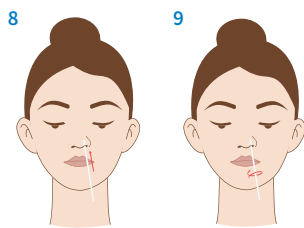
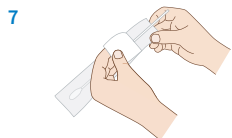
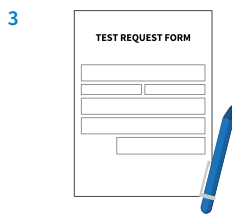
- Read and follow all instructions included in this kit before collecting the sample.
- **On the day of the test, do not use nasal sprays, saline irrigation, or nasal medications prior to specimen collection.**
- Use your legal name, address, and date of birth. If you've created a BioIQ profile, your paperwork should match what is provided in your profile. If you are administering this test to someone else, please use their legal name and date of birth for the required paperwork.
- Be careful not to spill the liquid from the Collection Tube. If liquid is spilled, the lab will reject the sample.
- Ensure the lid is tight. The lab will reject the sample if there is leakage.
- **Plan ahead:** Be prepared to return the sample the same day as collection.
- Do not mail the sample on Saturday or Sunday. Extended transit times may result in your sample expiring.

Anterior Nasal Swab Instructions

Caution

- Use only materials provided in the kit to collect and store sample.
- Before opening the Swab package, please note the perforation (break-point) on the stick. After collecting the sample, insert the Swab into the Collection Tube, and break at the perforation. **DO NOT** touch the soft end of the Swab as this may render the sample invalid.
- Do not use nasal sprays, saline irrigation, or nasal medications prior to specimen collection.

Specimen Collection



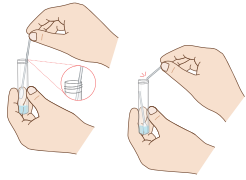
Prepare for Sample Collection

1. Place all kit contents on a clean, dry surface.
2. Remove Collection Tube from its packaging.
3. Complete all enclosed paperwork, filling in all fields completely and legibly. **Note: The lab may not be able to process the test if this information is incomplete.**
4. Apply a sticker label from the top-right-hand corner of the Test Request Form to a blank space along the side of the Collection Tube. **Note: Disregard any remaining stickers; they are for lab use only.**

Sample Collection

5. Remove cap from Collection Tube and place the tube on a flat, dry, and clean surface in an upright position so that the liquid does not spill.
6. Wash your hands for at least 20 seconds or apply hand sanitizer with at least 60% alcohol. Cover all surfaces of your hands and rub them together until they feel dry.
7. Remove the Swab from its package, being careful not to touch the soft end with your hand.
8. Insert the Swab into either nostril. Do not insert the Swab more than half an inch into either nostril. **Note: If testing another individual, exercise caution when inserting the Swab into the nostril. Gently insert the Swab until resistance is met.**
9. Slowly twist the Swab, rubbing it along the insides of the nostril for 15 seconds.
10. Gently remove the Swab.
11. Using the same Swab, repeat steps 8-10 in the other nostril.

12



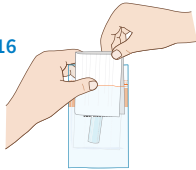
13



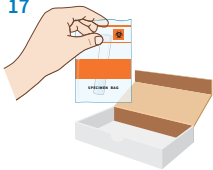
14



16



17



18



Preparation of the Sample for Return

12. Place the Swab into the sterile Collection Tube and snap off the end of the Swab at the perforation.
13. Close the Collection Tube cap tightly.
14. Place the Collection Tube in the main compartment of the Specimen Bag and seal the bag closed. **Note: Disregard the Absorbent Pad, this is included for transportation security.**
15. Wash your hands for at least 20 seconds or apply hand sanitizer with at least 60% alcohol. Cover all surfaces of your hands and rub them together until they feel dry.
16. Fold the completed paperwork and insert it into the outer pocket of the Specimen Bag (this acts as cushioning). **Note: Ensure that ALL required paperwork is included with the sample.**
17. Fold the Specimen Bag over, fit into Small Shipping Box, and close securely. It may be a tight fit; press firmly.
18. Insert the Small Shipping Box into the labeled UN 3373 Return Overpack, removing as much excess air as possible. Remove inner strip to expose adhesive and press firmly to make sure Overpack is completely sealed.
19. Drop off the sealed Return Overpack containing your specimen at a FedEx drop box, authorized ship center or schedule a FedEx pickup. It is extremely important you do this the same day your sample is collected. **Note: Do not mail the specimen on Saturday or Sunday. Extended transit times may result in the specimen expiring.**
20. Discard remaining sample kit items.

Receive Results

- Results should be available 48-72 hours after specimen arrives at the lab.
- Once results are posted, you will receive a text and/or email with instructions to log in to your account and receive your results.

Questions?

Contact Customer Service
 877-862-4647
 Monday-Friday
 8AM to 11PM EST

- Prescription only IVD (In-vitro diagnostics).
- This home collection kit has not been FDA cleared or approved.
- This home collection kit has been authorized by FDA under an EUA. This home collection kit has been authorized only for the home collection and maintenance of nasal swab specimens as an aid in detection of nucleic acid from SARS-CoV-2, not for any other viruses or pathogens.
- This test is only authorized for the duration of the declaration that circumstances exist justifying the authorization of emergency use of in vitro diagnostics for detection and/or diagnosis of COVID-19 under Section 564(b)(1) of the Act, 21 U.S.C §360bbb-3(b)(1), unless the authorization is terminated or revoked sooner.